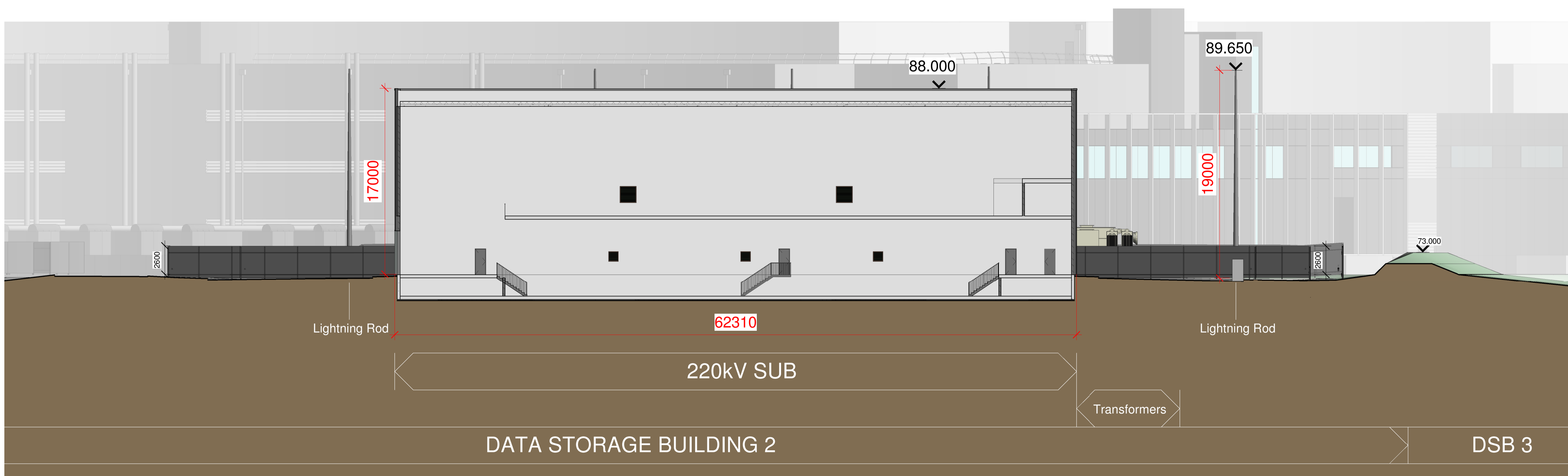


REVISIONS

REV NO.	DATE	DRN	CHK	DESCRIPTION
P1	17/07/2020	HN	SM	Issued for SID

2 1005 Substation Compound Section A-A
1 : 500



KAVANAGH TUITE ARCHITECTS
 TERMINUS MILLS CLONSKEAGH ROAD D06 XD37 IRELAND
 T: +353 1 2188500 MAIL@KAVANAGHTUITE.IE

FILE NAME
A1045-KT-XX-XX-DR-A-1005-P1
 PROJECT: EngineNode 220kV Substation and Grid Connection
 PROJECT NO. **A1045** STATUS:

TITLE:
Substation Compound Sections

DATE: 04/20/20 SCALE: As indicated
 DRAWN BY: HN APPR BY: SM
 DWG NO. **1005** REV. **P1**

1 1005 Substation Compound Section B-B
1 : 200